

5/3/17 Eagle Mtn. East Spur Seeps

224-14

Field Trip #2 with Pierre Levesave and Dave Turan

(Field Trip #1 is 11/13/16, pp. 224-7 to 10)

(Barometer accidentally left in wagon this hike; Using Pierre's altimeter and triangulation with Balsam & Slide Mtns. at highest point of hike)

Pressure rose on MK barometer 0.18" from 10 AM to 4:30 PM

Using same site letters as 11/13/16 with additional sites (S) to (Y).

Site	Pierre's altimeter	adjusted altimeter	Pierre's map	MK elevs. 11/13/16	e map (USGS)	time
(C) Levesave residence	—			1440	1450	ca=10=00
(S) 1st open field	1650'			↓ bypassed in 2013		
(T) Pig pen	1800		1860'		1860'	10-40
(U) 2nd open field	—					
(V) Divate's Cove	—					
(K) Foundation (lunch)	2200'		2190' 2200'	2267, 2200'		11:55
(N) 3 pair of stone piles	2350'			2460'		
(O) 1st open seep (Joerje)	2525'	2590 may be correct		2550', 2633'		
(Z) 2nd open seep (barberry)		Pierre is reading 65' too low		2590'		
(W) penultimate seep	2650'			↓ by triangulation in 2013		
(X) ultimate seep	2800'					
(Y) ledge top; highest point on hike	2850'	2850+ 65=2915		[triangulation] 2850'	2900' (ledge base 2840)	1:30 to 2:00
(AA) highest stump	2675'	±2740'				
(Z) 2nd open (barberry) seep	2500'			2590'		
(BB) south side seeps	2400'					2:45
(M) return to skid trail	2275'			2412'		
(K) foundation (snack stop)	—			2267, 2200'		3:00 to 3:15
(L) Pierre's Corner	2200'		2430'			
(F) breccia stacked boulder	—			1950, 1911'		4:00
(C) Levesave residence	1225'			1440'	1450'	4:30 PM

Vegetation

224-15

(C) Lone big SNAG S of Levesque garage

(C) to (T) BB scattered up to Pig Pen
Very few OAK.

(Z) to (W) to (X): Extraordinary nearly
continuous seeps with acres of
ALLIUM, even on the slopes between
terraces (Z) (W) + (X)

All 6 Viola spp. in flower
SOMEWHERE on the hike on 5/3/17,
but not necessarily all 6 betw. (Z) + (X).

(Z) ASH

(W) BASS, VC, MATTEUCIA

Seeps have MITELLA, TIAR, CAULO,
DENT DI, CLAYTONIA, ERY, 2 DICENTRAS

Slope between (Z) + (W) was de-
foliated in 2006-2007 with dead SUBS.
Ledges small & isolated.

(Y) Top of 1st higher, more continuous
ledge. No more seeps. Forest denser
with B sprouts & rocky. Still some
SUB, but also B-PB-BC-ASH
LL, SINT leafing weeks early,
DIER FULVUM on nearly all boulders

Triangulation done here to
confirm elevation (see →)

Kemlock grave across McKenley
Hollow still visible through SUBS
in flower.

Levesques purchased the 90 ± acre
tract in 1992. Pierre in 2017 is 57.

Triangulation from (Y):

Peak	magnetic	true	reverse
Balsam Mt.	N12°E	N1°W	S1°E <small>south</small>
Slide Mt.	N143°E	N130°E	N50°W
Panther Mt.	N100°E	N87°E	S87°W <small>south</small>

Does not match other two bearings plotted on map.
Error?

(AA) On descent. Highest stumps. >> SCy
and too crumbling to sample.
2675' ??

(F) Viola in flower at breccia stacked
boulder (breccia? boulder placed
on top of a SS boulder).

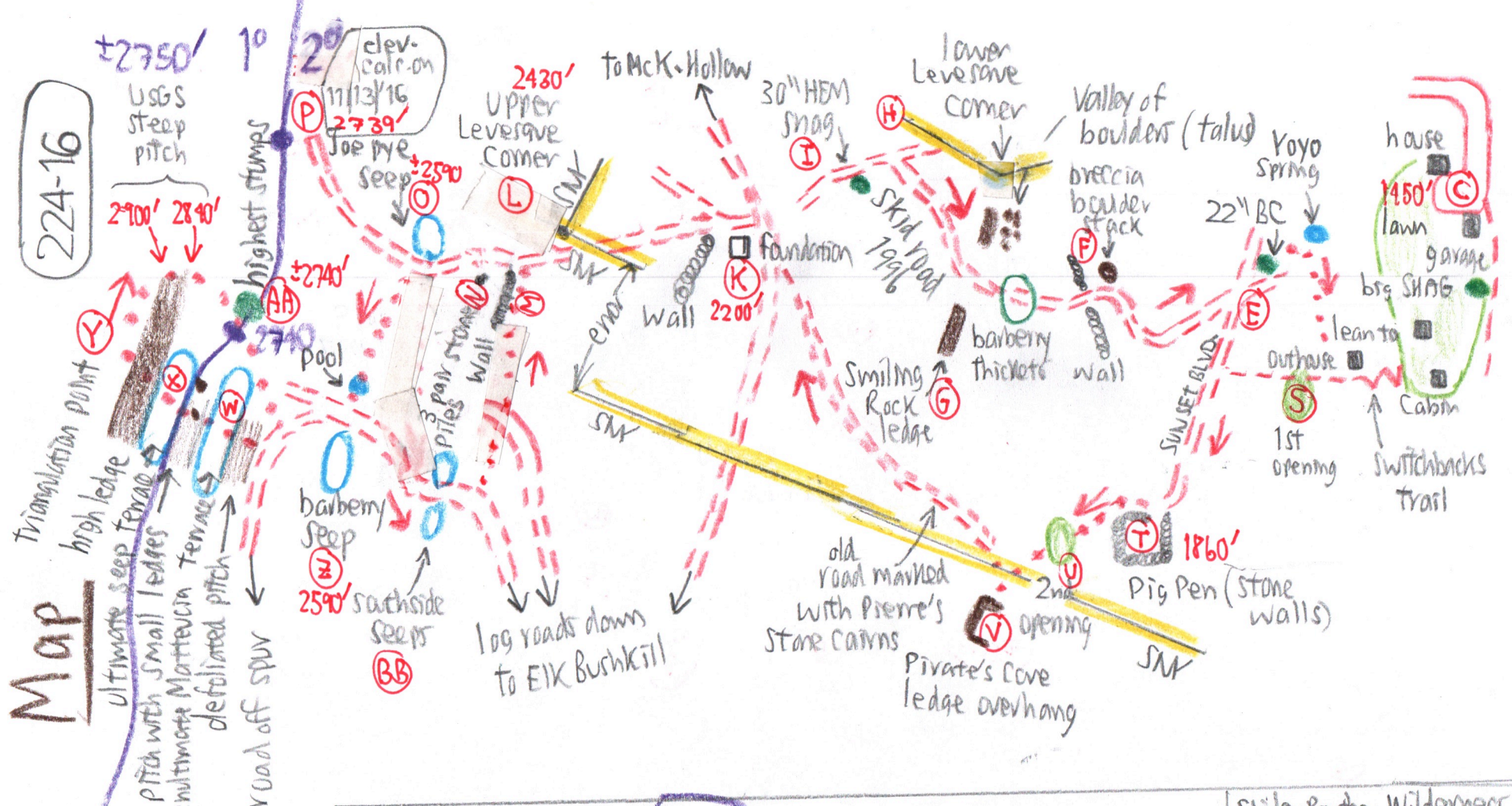
(G) Adiantum leafing at lower edge of
(P) barberry patches.

Three logging eras:

Oldest — old stump at (AA) ±2740', so
crumbling that wood sampling was
not possible. Maybe 1950s or
earlier? Old road that we followed
up (V) to (K) may have served it with trees
← Pierre suggests horse-drawn narrow road.
Middle log roads to (P) + (Z) before SNY
acquisition betw. 1985 & 1989.

Recent — Pierre's land in 1996, but
leaving a border along SNY line.

now ±
70 to
100y



Map

224-16

±2750'

USGS steep pitch

2700' 2840'

highest stumps

1°

2°

±2740'

±2740'

pool

barberry seep

25°

southside seeps

BB

log roads down to Elk Bushkill

old road marked with Pierre's Stone Cairns

Private's Cove ledge overhang

2nd opening

Pig Pen (stone walls) 1860'

SUNSET BLVD

1st opening

Outhouse

lean to

brg SHAG

garage

lawn

house 1450'

Cabin

Switchbacks Trail

Yoyo Spring

22" BC

brecia boulder stack

Valley of boulders (talus)

Lower Leverage Corner

Upper Leverage Corner 2430'

to McK-Hollow

30" HEM snag

Skid Road 1996

barberry thicket

Smiling Rock ledge

foundation

Wall

2200'

K

3 pair stone wall

penultimate Matteucin Terrace

defoliated pitch

penultimate steep terrace

high ledge

Triangulation Point

ultimate seep terrace

Pitch with small ledges

road off spur

10

20°

±2740'

to 2800'*

e.p. #23

entry point: #23 as of 1972 (June 11) p. 224-4, in #153 Transects file, at 3000 ft. Move downslope to 2740'

11/13/16: just above (P) 2739' where log road ends.

5/3/17 ① highest stump at (AA) ±2740'.

The blaze stopped the logging, prob., NOT the high ledge.

② also about midway between (Z) and (P), probably between (W) + (X), also about 2740' or 100' below base of steep ledged pitch. Trees from (W) to (Y) are NOT unusually large or old. The SNY blaze was here prior to 1985-1989 acquisition.

Slide-Panther Wilderness UMP fold-out large map ca. 1987 shows blaze at 2800 ft * exactly